

see plat Book
page 142

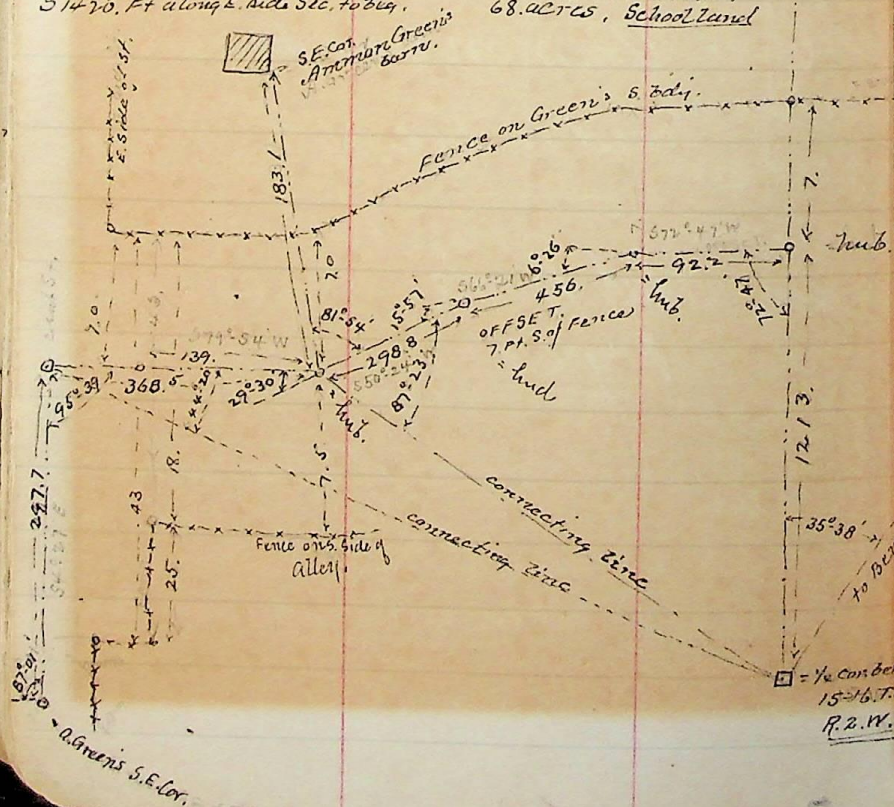
(47)

Nov 4-1896.

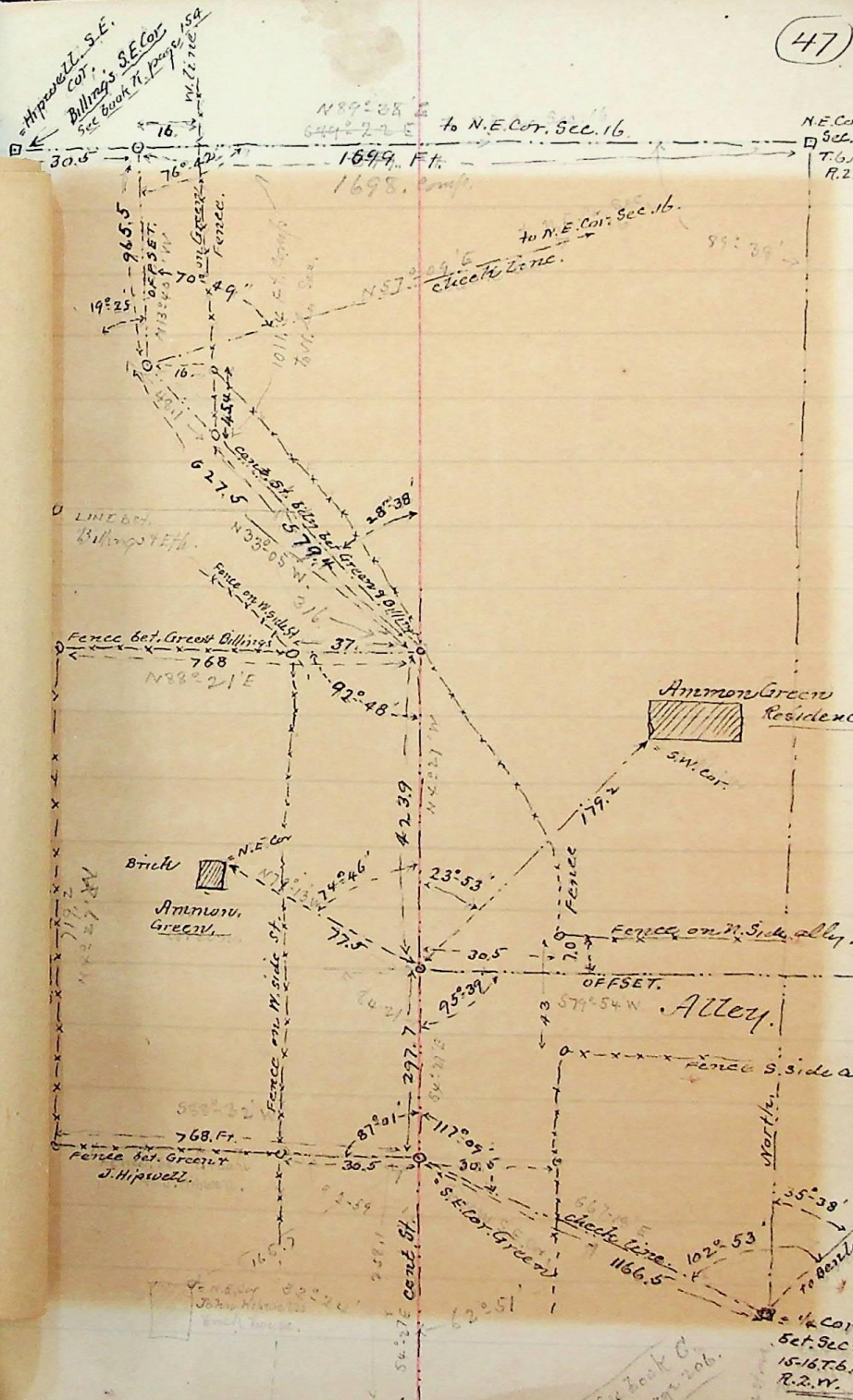
Survey made for Ammon Green

in N.E. 1/4 Sec. 16 T.6. N. R. 2. W. Salt Lake Meridian.

Described as follows: Pt. of N.E. 1/4 Sec. 16 T.6. N. R. 2. W. - Beg. at point on E. line of S.W. 1/4 Sec. 1220. Ft. N. of S. E. Cor. thereof. Running thence S72°47'W. 92.2 ft. S66°21'W. 456. Ft. S50°29'8"E. 298.8 Ft. S4°27'E 14.5 Ft. to S. Side of Alley. S79°54'W 139. Ft. along S. Side of alley. S4°27'E. 28.5 ft. to S. Side of alley. S79°54'W 229.5 ft. along S. Side of alley, and to cent. of St. - S4°27'E. 261.7 ft. along cent. of St. S. 88°32'W. 768. Ft. along Fence N4°27'W 719.2 Ft. along Fence - N88°21'E. 768. Ft. along fence to cent. St. N. 33°05'W. 579.4 Ft. near cent. St. N 13°40'W 1011.4 ft. along Fence to N. line Sec. 16 1686.1 Ft. to N.E. Cor. Sec. 16. S 1470. Ft. along E. Side Sec. to 349. 68. ACRES, School land



(47)



see Book of
page 142